

**PUBLIC PATH DIVERSION ORDER
HIGHWAYS ACT 1980**

HERTFORDSHIRE COUNTY COUNCIL

**Hertfordshire County Council
(Sawbridgeworth 1 and Thorley 10 and 11)
Diversion Order 2018**

This Order is made by Hertfordshire County Council ("the authority") under section 119 of the Highways Act 1980 ("the 1980 Act") because it appears to the authority that in the interests of the owners and the occupier of the land crossed by the footpaths and bridleway described in paragraph 1 of this Order and of the public it is expedient that the line of the paths should be diverted.

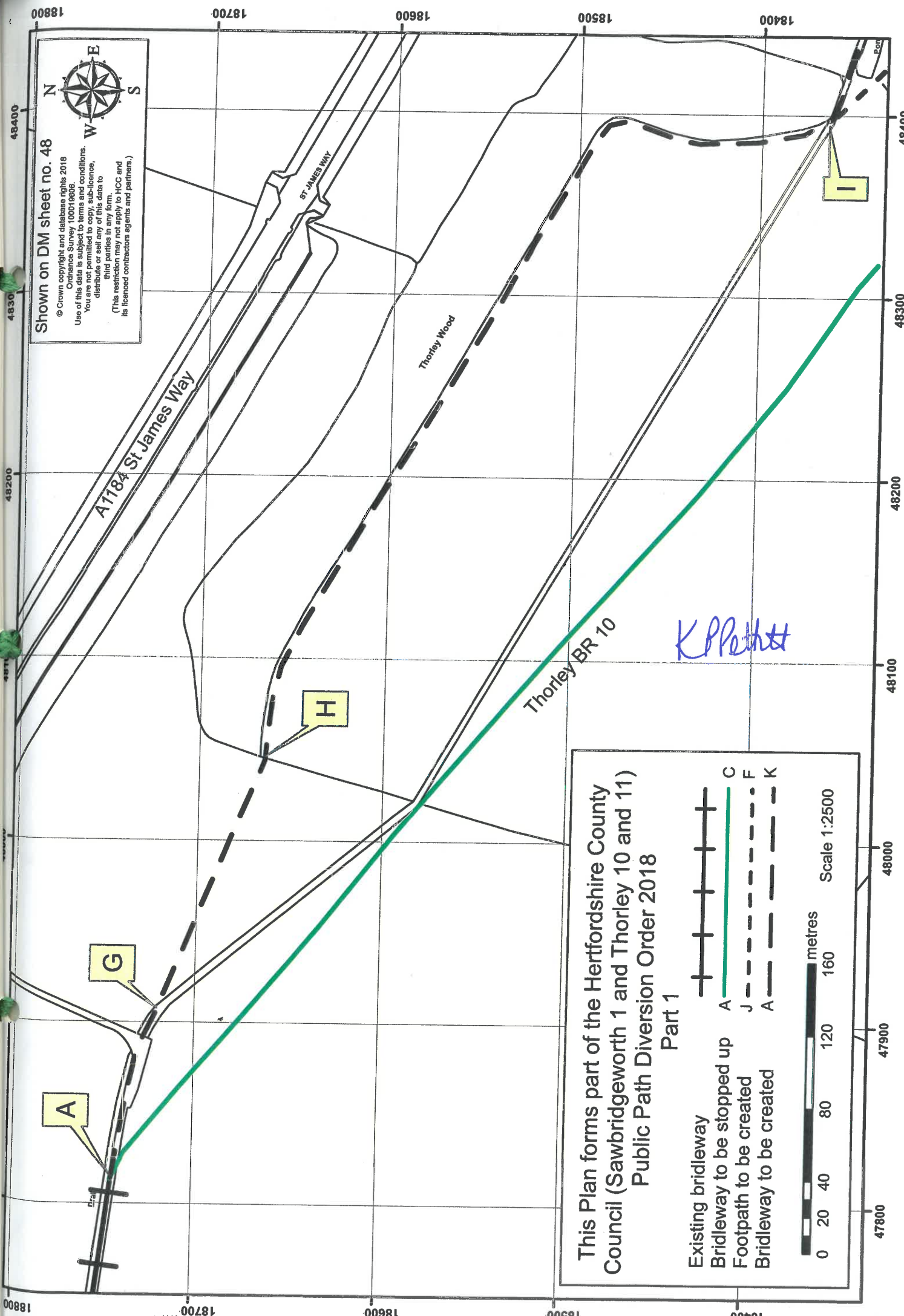
John Tinney & Co Limited, John Frederick Tinney, David Lawson Tinney and Ingrebourne Valley Limited have agreed to defray any compensation which becomes payable in consequence of the coming into force of this Order and any expenses which are incurred in bringing the new site of the path into a fit condition for use by the public.

East Herts Council have been consulted as required by section 120(2) of the 1980 Act.

BY THIS ORDER:

1. The public rights of way over the land situate at Thorley and shown by bold continuous lines on Parts 1 and 2 of the Plan contained in this Order ("the Order Plan") and described in Part 1 of the Schedule to this Order shall be stopped up on the date on which the authority certifies that the public bridleway and public footpath described in paragraph 3 below are in a fit condition for use by the public such date not being earlier than 60 days from the date of confirmation of this Order.
2. There shall at the end of 60 days from the date of confirmation of this Order be a public footpath and bridleway over the land situate at Thorley described in Part 2 of the Schedule and shown by bold broken lines on the Order Plan
3. The rights conferred on the public under this Order shall be subject to the limitations and conditions set out in Part 3 of the Schedule.

Shown on DM sheet no. 48
 © Crown copyright and database rights 2018
 Ordnance Survey 100019838
 Use of this data is subject to terms and conditions.
 You are not permitted to copy, sub-licence,
 distribute or sell any of this data to
 third parties in any form.
 (This restriction may not apply to HCC and
 its licensed contractors agents and partners.)



K.P. Pethitt

This Plan forms part of the Hertfordshire County Council (Sawbridgeworth 1 and Thorley 10 and 11) Public Path Diversion Order 2018

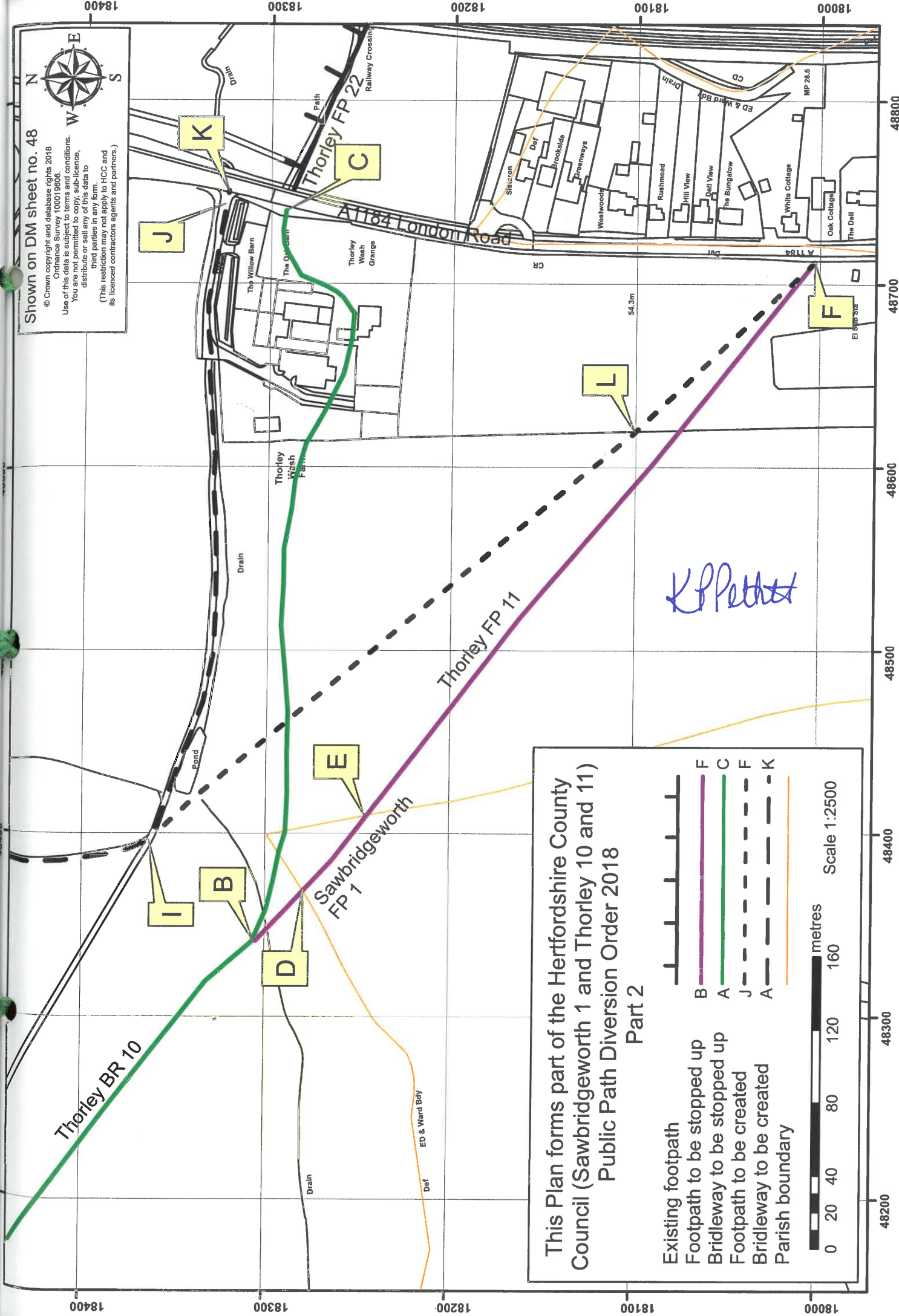
Part 1

- Existing bridleway
- Bridleway to be stopped up
- Footpath to be created
- Bridleway to be created



18800 18700 18600 18500 18400 48400 48300 48200 48100 48000 47900 47800

Shown on DM sheet no. 48
 © Crown copyright and database rights 2018
 Ordnance Survey 100019606
 Use of this data is subject to terms and conditions.
 You are not permitted to copy, sub-licence,
 distribute or sell any of this data to
 third parties in any form.
 (This restriction may not apply to HCC and
 its licenced contractors agents and partners.)



K.P. Petter

This Plan forms part of the Hertfordshire County Council (Sawbridgeworth 1 and Thorley 10 and 11) Public Path Diversion Order 2018
 Part 2

Existing footpath	—
Footpath to be stopped up	—
Bridleway to be stopped up	—
Footpath to be created	—
Bridleway to be created	—
Parish boundary	—

Scale 1:2500
 0 20 40 80 120 160 metres

18400

18300

18200

18100

18000

18400

18300

18200

18100

18000

48800

48700

48600

48500

48400

48300

48200

SCHEDULE

PART 1

DESCRIPTION OF SITE OF EXISTING PATH OR WAY

The full width of Thorley Bridleway 10 commencing at TL 4781 1874 (point A on Part 1 of the Order Plan) and continuing in a generally south easterly direction for approximately 690 metres to the junction with Thorley Footpath 11 at TL 4834 1830 (point B on Part 2 of the Order Plan), then turning generally east and continuing for approximately 435 metres through Thorley Wash Farm and Thorley Wash Grange to join the A1184 London Road (public road) at TL 4874 1829 (point C on Part 2 of the Order Plan).

The full width of Sawbridgeworth Footpath 1 and Thorley Footpath 11 commencing from Thorley Bridleway 10 at TL 4834 1830 (point B on Part 2 of the Order Plan) as Thorley Footpath 11 and continuing in a generally south easterly direction for approximately 40 metres to the parish boundary at TL 4837 1828 (point D on Part 2 of the Order Plan), then continuing as Sawbridgeworth Footpath 1 in a generally south easterly direction for approximately 50 metres to the parish boundary at TL 4841 1824 (point E on the Order Plan) then continuing as Thorley Footpath 11 in a generally south easterly direction for 390 metres to join the A1184 London Road (public road) at TL 4871 1800 (point F on Part 2 of the Order Plan).

PART 2

DESCRIPTION OF SITE OF NEW PATH OR WAY

A public footpath commencing at the track on the western side of the pond at TL 4839 1836 (point I on Parts 1 and 2 of the Order Plan) and continuing in a generally south easterly direction across the field for approximately 420 metres (through the gap at TL 4861 1810 (point L on Part 2 of the Order Plan)) to join the A1184 London Road (public road) at TL 4871 1800 (point F on Part 2 of the Order Plan).

Width: 2.5 metres

A public bridleway commencing at TL 4781 1874 (point A on Part 1 of the Order Plan) and continuing in a generally east south easterly direction along the track for approximately 100 metres to TL 4790 1872 (point G on Part 1 of the Order Plan) then continuing across the field for approximately 150 metres to the western corner of Thorley Wood at TL 4804 1866 (point H on Part 1 of the Order Plan). Continuing in a generally south easterly then southerly direction around the field edge for approximately 520 metres before rejoining the track at TL 4839 1836 (point I on Parts 1 and 2 of the Order Plan). Then continuing along the track in a generally easterly direction for approximately 360 metres to join the A1184 London Road (public road) at TL 4875 1832 (point K on Part 2 of the Order Plan).

Width: 5 metres

PART 3
LIMITATIONS AND CONDITIONS

A gap to BS5709 of 1.2 metres at TL 4861 1810 (point L on Part 2 of the Order Plan)
A gap to BS5709 of 1.2 metres at TL 4871 1800 (point F on Part 2 of the Order Plan)

A gap to BS5709 of 2 metres at TL 4804 1866 (point H on Part 1 of the Order Plan)
A vehicle access gate to BS5709 at TL 4874 1832 (point J on Part 2 of the Order Plan).

IN WITNESS whereof the COMMON SEAL of HERTFORDSHIRE COUNTY COUNCIL was hereunto affixed this 18 day of February 2018

The Common Seal of
HERTFORDSHIRE
COUNTY COUNCIL
was hereunto affixed
in the presence of:-

Kathryn Pettitt

Chief Legal Officer

